

**ROUGH  
COUNTRY**  
SUSPENSION SYSTEMS



## 1994—2001 1/2 Electric EZ-Go 4" Lift

Thank you for choosing Rough Country. We have been designing lift kits for trucks and SUVs for over 30 years and are extremely pleased you have chosen us for your golf cart lift needs.

Please read instructions before beginning installation. Check the kit hardware against the parts list of these instructions. Be sure you have all needed parts and know where they go. Also please review tools needed list and make sure you have needed tools.

### PRODUCT USE INFORMATION

As a general rule, the taller a vehicle is, the easier it will roll. Avoid situations where a side rollover may occur.

Generally, braking performance and capability are decreased when larger/heavier tires and wheels are used. Take this into consideration while driving. Do not add, alter, or fabricate any factory or after-market parts to increase vehicle height over the intended height of the Rough Country product purchased. Mixing component brands is not recommended.

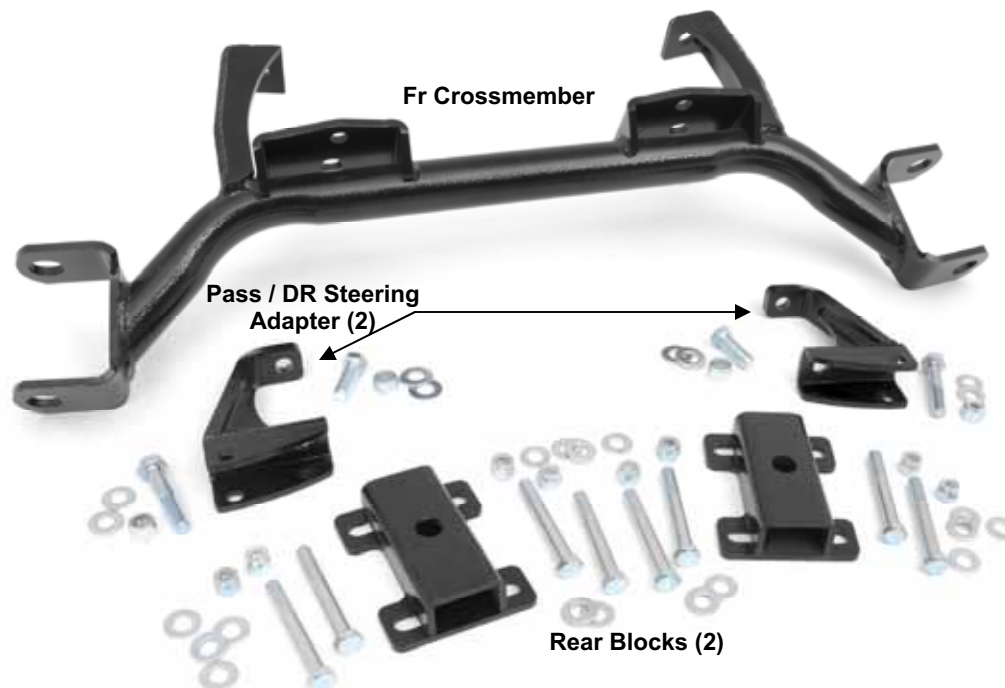
Rough Country makes no claims regarding lifting devices and excludes any and all implied claims. We will not be responsible for any product that is altered. If question exist we will be happy to answer any questions concerning the design, function, and correct use of our products.

This suspension system was developed using a 22" to 23" diameter x 10.5" wide tires, and wheels with 2" backspace for maximum stability. **Note—Stock wheels will not work with the wider tires.**

### NOTICE TO DEALER AND VEHICLE OWNER

Any vehicle equipped with any Rough Country product should have a "Warning to Driver" decal installed on the steering column. The decal should act as a constant reminder for whoever is operating the vehicle of its unique handling characteristics.

### KIT CONTENTS:



### Kit Contents:

Front Crossmember  
Steering Adapter (2)  
Rear Blocks (2)

### Kit Bag Containing:

10mmx 55mm Bolt (2)  
10mm Lock Nut (2)  
10mm Flat Washer (4)  
7/16" x 1 1/4" Bolt (2)  
7/16" Lock Nut (2)  
7/16" Flat Washer (4)  
3/8" x 3" Bolt (8)  
3/8" x Lock Nut (8)  
3/8" Flat Washer (16)

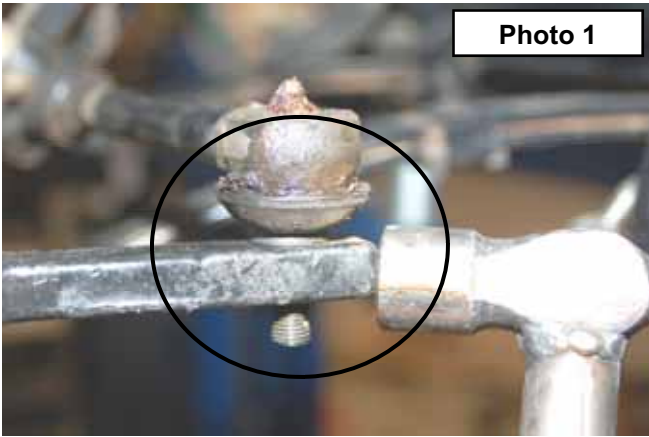
### TOOLS NEEDED:

Floor Jack  
Jack stands  
9/16" socket / wrench  
5/8" Socket / wrench  
3/4" Socket / Wrench  
17mm Socket / wrench  
18mm socket / wrench

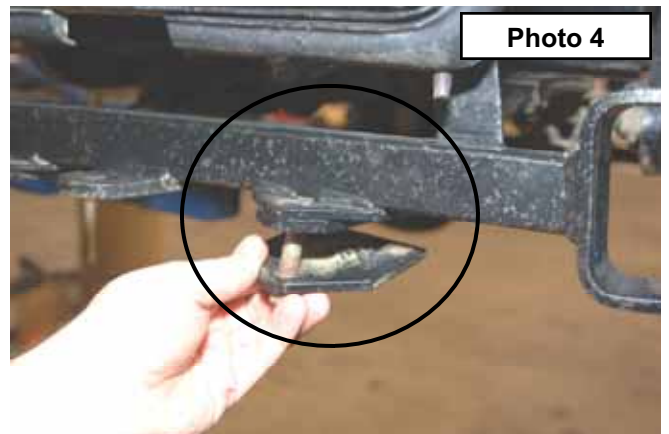
**ROUGH  
COUNTRY**  
SUSPENSION SYSTEMS

## FRONT INSTALLATION

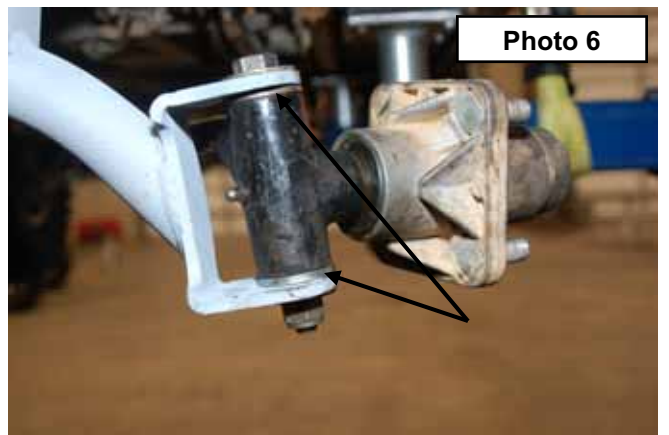
1. Jack up the front end of the cart and place it on jack stands. You will be installing larger wheels and tires so raise the cart high enough to accommodate for the additional height.
2. Remove the wheels and tires using a 3/4" socket.
3. Remove the cotter pins from tie rod end and remove the nut using a 18mm wrench.
4. Strike the tie rod as shown to release the tie rod from the spindles. **See Photo 1.**
5. Remove the shock absorber from the front cross-member using a 9/16" wrench. **See Photo 2.**



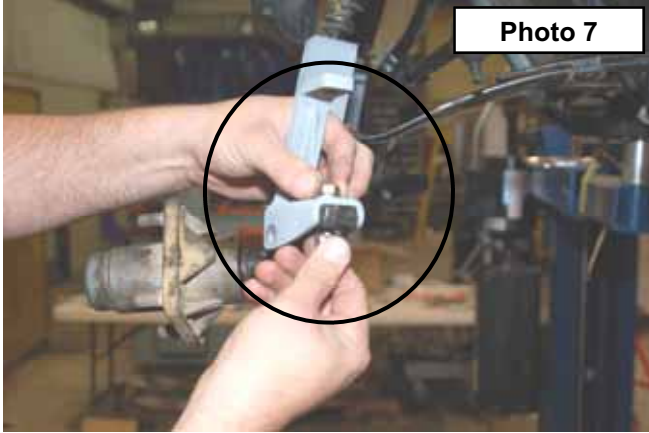
6. Remove the spindles from the front axle using a 3/4" wrench. **See Photo 3.** Retain the stock hardware for reuse.
7. Using a 9/16" wrench remove the front axle from the leaf springs by removing the three bolts per side. Retain hardware for reuse. **See Photo 4.**



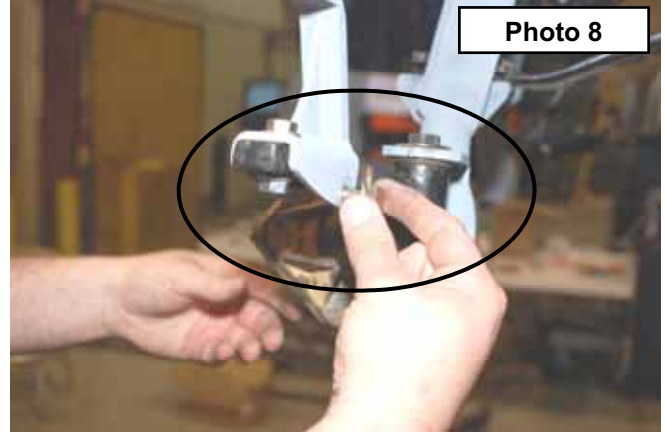
8. Install the new front cross member with the stock hardware and mount the leaf springs to the new axle using the stock hardware and supplied spring plates. **See Photo 5.** Tighten using a 9/16" wrench.
9. Reinstall the stock spindles in the front cross-member with the stock hardware. **See Photo 6.** Tighten using a 3/4" wrench.



10. Install the supplied steering brackets to the stock spindles with the supplied hardware. The supplied 1 1/4" bolt will install in the stock hole in the knuckle. **See Photo 7.** Do not tighten at this time.
11. The supplied 2" bolt will install on the remaining hole on the bottom of the steering bracket. **See Photo 8.** Tighten both bolts using a 5/8" wrench on the 1 1/4" bolt and a 17mm wrench on the 2" bolt.

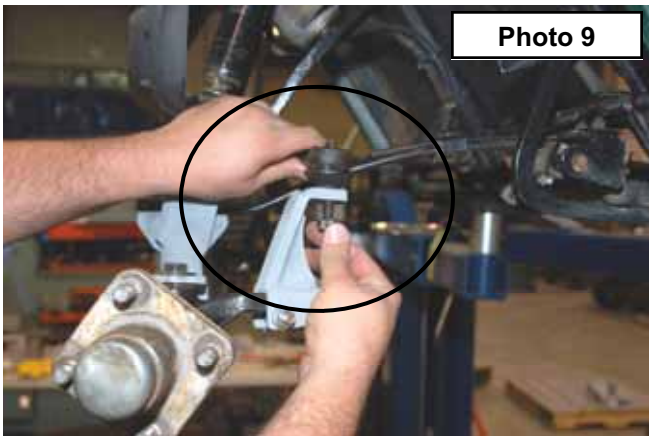


**Photo 7**

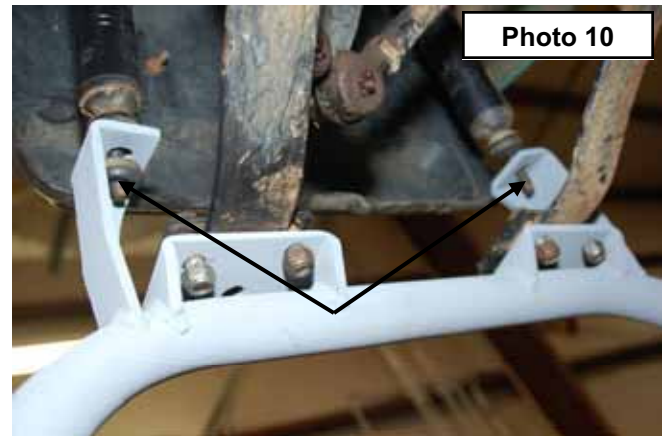


**Photo 8**

12. Attach the tie rod ends to the extensions. Install the stock cotter pin and nut. Tighten nut using a 3/4" wrench. **See Photo 9.**
13. Reinstall the shocks to the new cross-member. **See Photo 10.**



**Photo 9**



**Photo 10**

14. Tighten all hardware.
15. Install tires and wheels and tighten using a xx socket. Wider diameter wheels / tires are recommended for maximum stability.
16. Jack up the cart, remove the jack stands and lower the vehicle to the ground.
17. Set the toe in on the front end to approx 1/8".

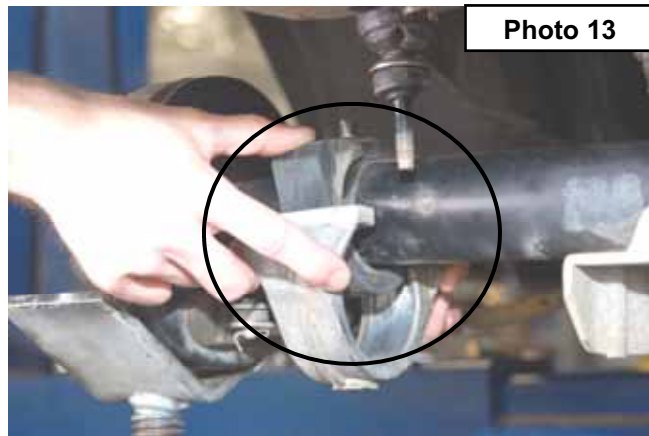
### REAR INSTALLATION

1. Jack up the rear end of the cart and place jack stands on the frame in front of the springs. You will be installing larger wheels and tires so raise the cart high enough to accommodate the additional height.
2. Remove the wheels and tires.
3. Support the rear axle.
4. Unbolt the bottom of the shocks using 9/16" wrench. Clean and lubricate these bolts for later use—**See Photo 11.**
5. Remove the u-bolts from the rear axle using a 9/16" wrench. Remove the leaf spring bolts from the frame and shackle using and 3/4" and 9/16" wrench. —**See Photo 11.**

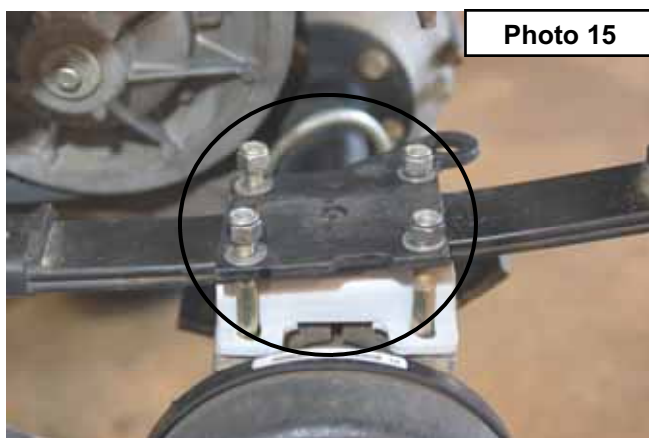
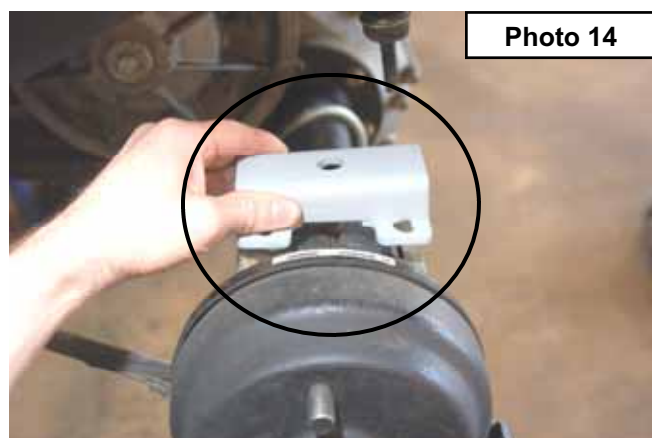


**Photo 11**

6. Flip the aluminum and rubber housing mounts on the housing 180 degrees from the original position. NOTE: A small amount of the rubber might need removed to fit around the pin welded to the axle —See Photo 12 and 13.



7. Place the new rear block with the flat surface down and the tall side towards the rear of the cart. —See Photo 14.
8. Place the leaf springs on top of the rear risers. Place the stock shock plate on the top of the springs. Replace the 3/8" U-bolts with the supplied 3" bolts and tighten them evenly between both sides. Bolt the springs into place—See Photo 15.



9. Bolt the rear of the springs into place using the stock bolts and attach the bottom of the shocks to the new location of the shock mounts using the stock bolts.
10. Double check all nuts and bolts for tightness and install recommended wheel and tire size 22 x 11 x 10 wheels and tires with a 3 x 5" offset for maximum performance.
11. Included is a warning label which is to be placed on the steering column or another visible area and is to be read by all operators.

#### MAINTENANCE INFORMATION

It is the ultimate buyers responsibility to periodically have all bolts/nuts checked for tightness and to re-torque as needed.